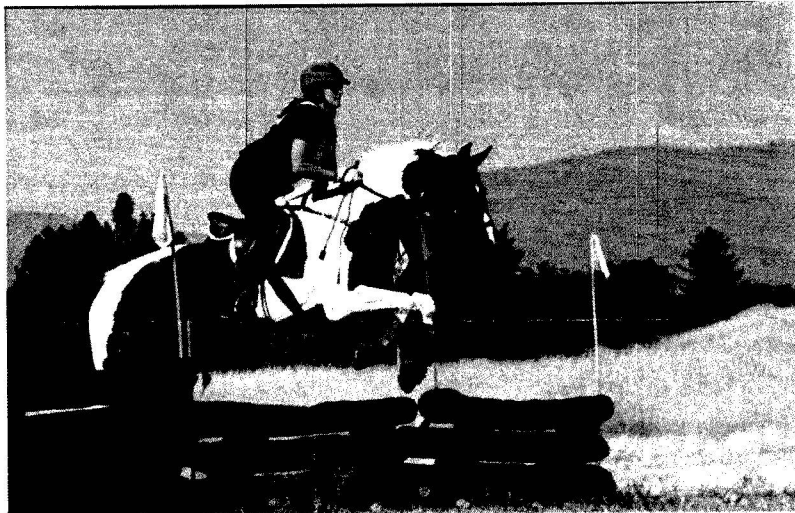




MISSOULA EQUESTRIAN PARK

P.O. Box 3841

Missoula, MT 59806



October 25, 2011

Target Range Home Owners Association
Peggy Morrison
4415 South Ave. West
Missoula, MT 59804

Dear Peggy,

On behalf of the Missoula Horsemen's Council, thank you for your donation of \$500 for the purchase of trees and shrubs for the Missoula Equestrian Park. Among the varieties we have looked at, we have selected poplars, lindens, evergreens, and caragana. Your support is very much appreciated and it helps to make it possible for the Council to continue to work toward a greener park, weed control, dust reduction, and pleasing aesthetics.

Thanks again for your donation in support of the Missoula Equestrian Park. Your contribution is significant and enables the Council to continue to maintain and to improve the park in our quest to provide the best possible facility that we can for equestrian sport enthusiasts as well as those of the general public who enjoy the perimeter trail and the open space.

Sincerely,

Christine Foster

On behalf of The Missoula Horsemen's Council
EIN 81-0417210